

Diode driver (QCW / CW)

Information



- Designed to power the diode arrays used to pump high-power solid-state or fiber lasers.
- Optimized for use as part of laboratory, educational, experimental and industrial applications.
- In addition, it can be equipped with a controller of thermal stabilization of Peltier elements (TEC controller).
- It has current limit, duty cycle limit and safety interlocks.
- It is modified according to customer requirements for optimal selection of parameters for a specific load.

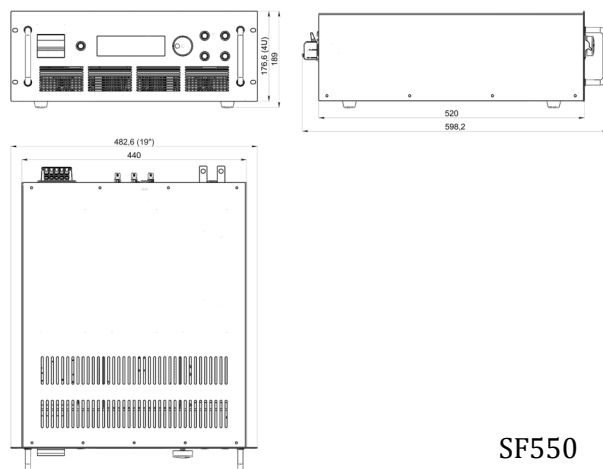
Specifications

| | SF550-160/30 | SF550-120/40 | SF550-80/60 | SF550-60/80 | SF550-40/120 |
|-----------------------------|-------------------------------|--------------|-------------|-------------|--------------|
| - Pulse (QCW) mode - | | | | | |
| Pulse rate* (F) | 1-1000 Hz, single mode | | | | |
| Output voltage* (V) | 0-30V | 0-40V | 0-60V | 0-80V | 0-120V |
| Output current* (I) | 1-320A | 1-240A | 1-160A | 1-120A | 1-80A |
| Pulse duration* (τ) | 50-1000 μs | | | | |
| Rise time** | <60 μs | | | | |
| Fall time** | <60 μs | | | | |
| - CW mode - | | | | | |
| Output voltage* (V) | 0-30V | 0-40V | 0-60V | 0-80V | 0-120V |
| Output current* (I) | 1-160A | 1-120A | 1-80A | 1-60A | 1-40A |
| - General characteristics - | | | | | |
| Output current tolerance | 0.3 % | | | | |
| Average output power* (P) | 4.8 kW | | | | |
| Data display | LCD | | | | |
| Communication interface | RS232, RS485 (optional) | | | | |
| Trigger in | 5 V, 10 μs | | | | |
| Trigger out | 5 V, 10 μs | | | | |
| Interlock | switch contact closure | | | | |
| Cooling | air cooled | | | | |
| Power Input | three phase 220/380 VAC, 50Hz | | | | |
| Dimensions | 440*177*520 mm; 4U | | | | |
| Weight | 25 kg | | | | |

* Values are limited by average power: $F \cdot V \cdot I \cdot \tau \leq P$ (pulse mode); $V \cdot I \leq P$ (CW mode)

**With a length of laser diode power wire is not more than 2m

Dimensions

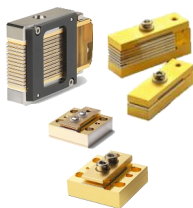


SF550

Examples of laser diode arrays

II-VI

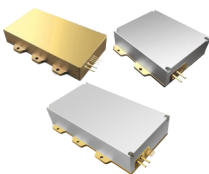
Laser II-VI



BPC/OPC40W,60W& 80W — 92A 1,8V
BPC/OPC80W — 81A 1,65V
HPC50W — 54A 1,65V
Monsoon Compact framed vertical stack module
Monsoon Frameless Vertical Stack Module
Compact Bar on Microchannel cooler and etc.

BWT

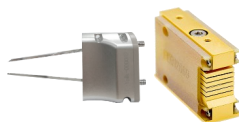
BEIJING



808nm150W - 11A 40V / 915nm150W — 13.5A 24V
915nm158W - 11A 36V / 915nm200W — 13.5A 35V
940nm150W - 14A 24V / 940nm200W — 14A 35V
976nm150W - 14A 23,8V / 976nm200W — 14A 35V
976nm100W - 11,5A 24V / 976nm140W — 14A 23,8V
976nm180W - 14A 35V
915/940/976nm на 600W / 1000W / 2000W / 3000W and etc.

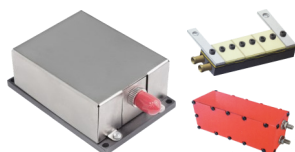
FOCUSLIGHT

Never stop exploring



Vshiny FL-HVS61-6X1-360-760 — 80A 15V
Vshiny FL-HVS61-6X1-600-1060 — 115A 2V
Vsilk FL-1200-1000-808 — 110A 20V and etc.

ИНЖЕКТ



Emitter of injection lasers IL-1M2
KMLD-130 — 65A 6V
32DL-504 / LLD-10
SLM-7 / SLM-P-8N
SLMP-6HП / LLD-500-1 and etc.